

# EFM8 Universal Bee Family

## QSG132: EFM8UB1-SLSTK2000A Quick Start Guide

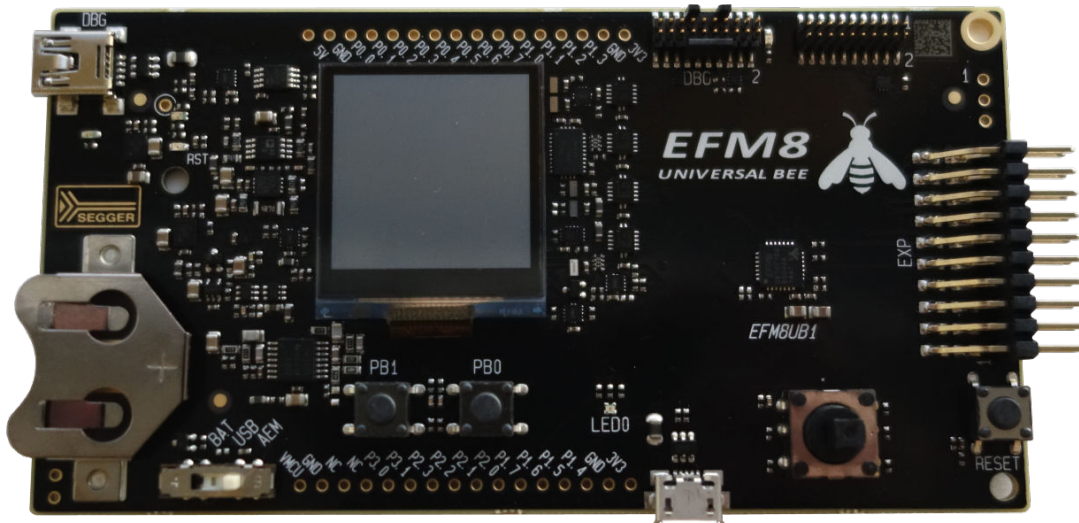


The EFM8UB1-SLSTK2000A is an excellent starting point to get familiar with the EFM8 Universal Bee microcontrollers.

The kit contains sensors and peripherals demonstrating some of the MCU's many capabilities. The kit can also serve as a starting point for application development.

### KIT CONTENTS

- EFM8UB1 Universal Bee Starter Kit Board
- 1 x mini USB cable
- 1 x micro USB cable
- 1 x CR2032 coin cell battery
- Getting Started card

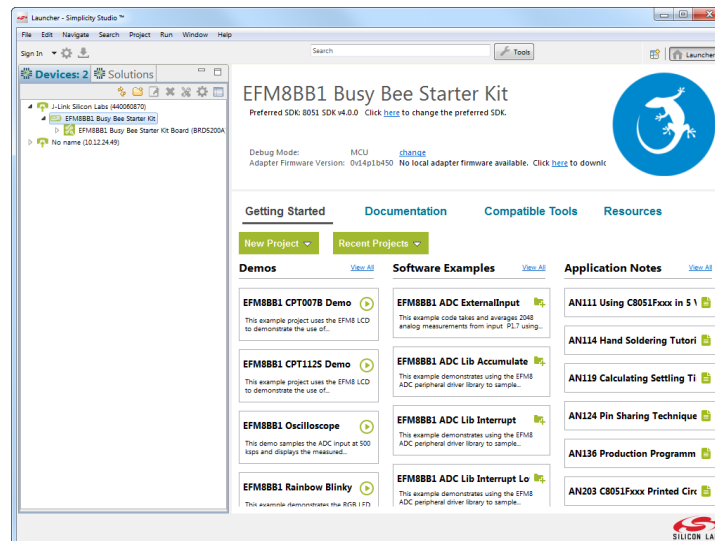


## 1. Getting Started

- Install Simplicity Studio

Simplicity Studio is a free software suite needed to start developing your application. Download the latest version of Simplicity Studio from the Silicon Labs website:

<http://www.silabs.com/simplicity-studio>

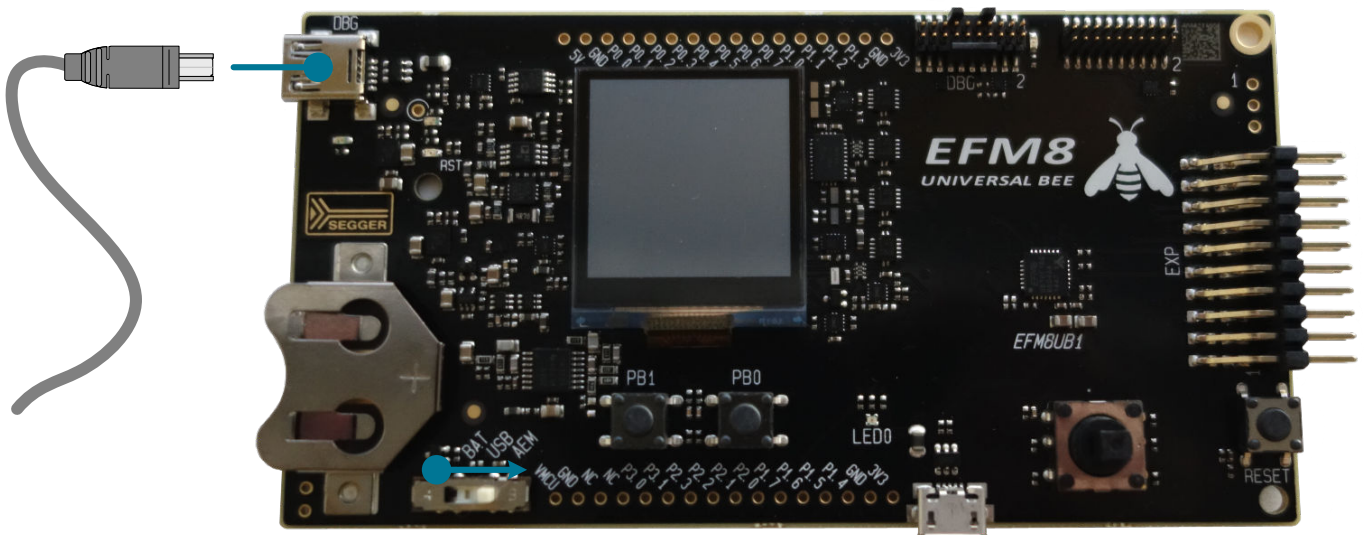


**Note:** The board comes pre-loaded with a default application, Space Invaders, to play with while the software downloads.

- Set Up Your Kit

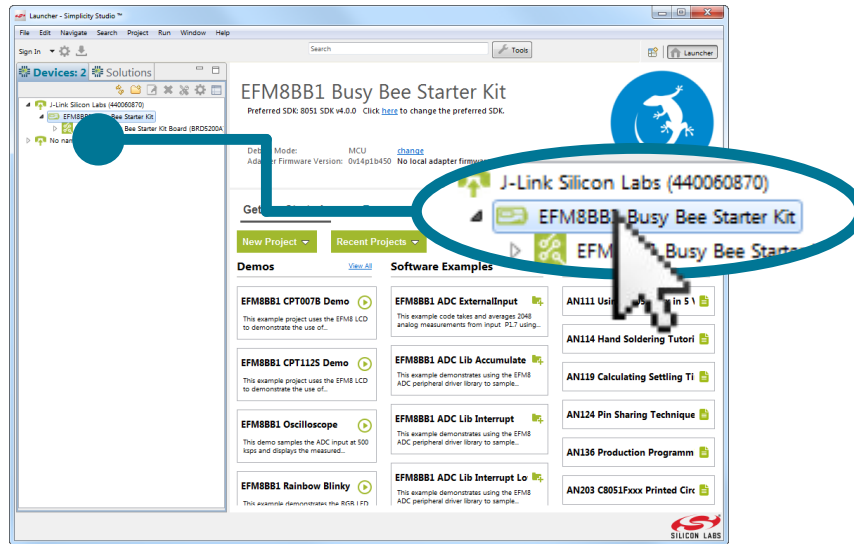
1. Provide power to the board by connecting the DBG USB connector to the PC using the provided USB cable.

**Note:** Some demos that use the device USB may require the second USB cable to be connected. See the demo description for more information.



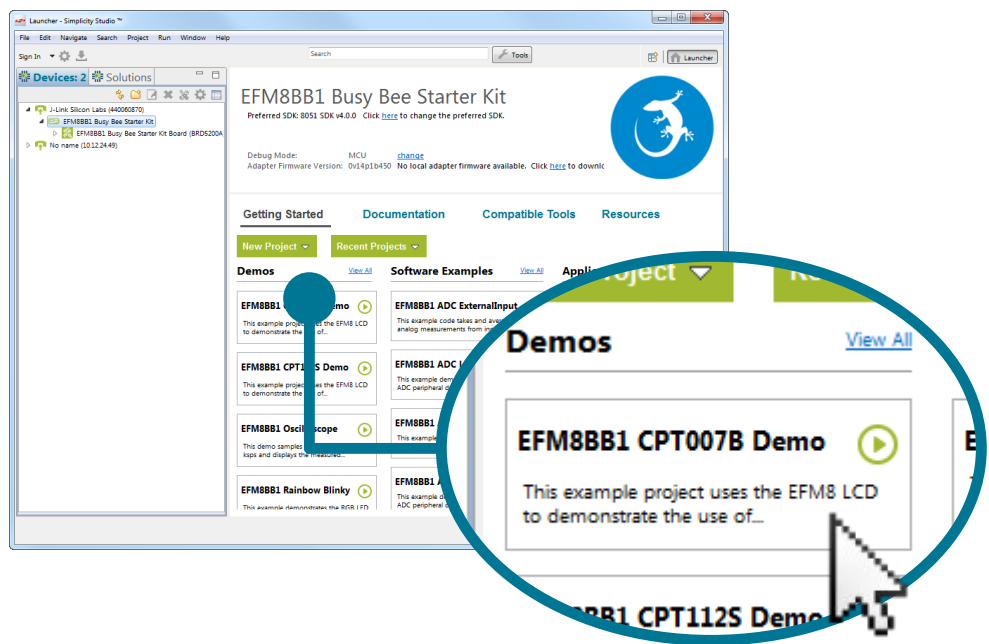
- Detect Your Device

1. Wait for the J-Link debug adapter to appear in the **[Devices]** area. The board may take some time to appear due to driver installations for the debug adapter.
2. Click the J-Link debug adapter or the board information corresponding to the board. This will verify that the installation was successful, identify the MCU on the kit hardware, and automatically configure the software tools for use with your device.



- Run Blinky

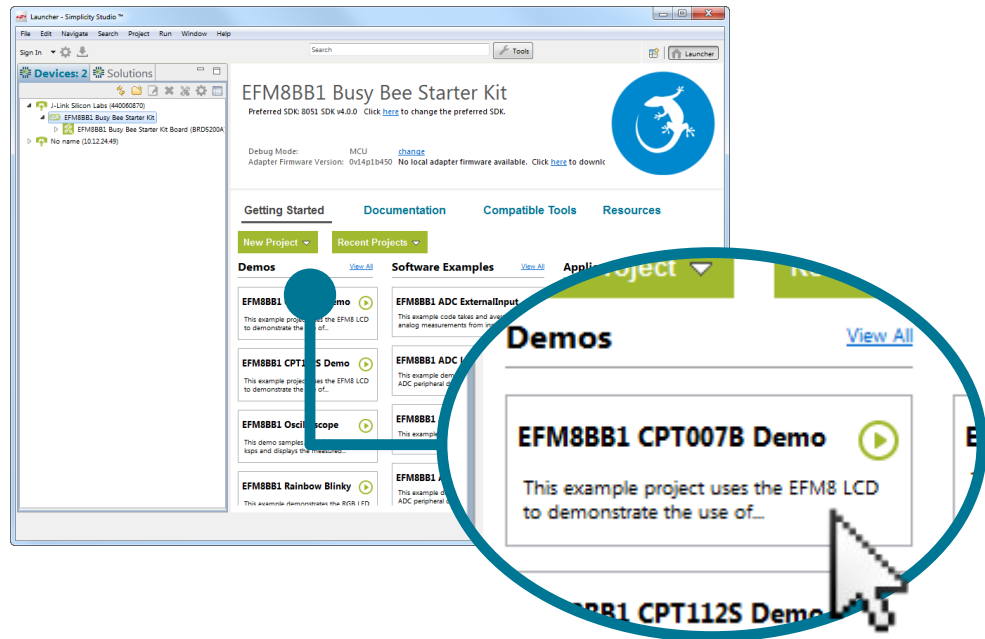
Click the **[Demos]** tile to load the available demos. Select **[Rainbow Blinky]** and click **[Start]** to download and run the demo. Follow the instructions on the kit LCD screen to run the demo.



## 2. Resources

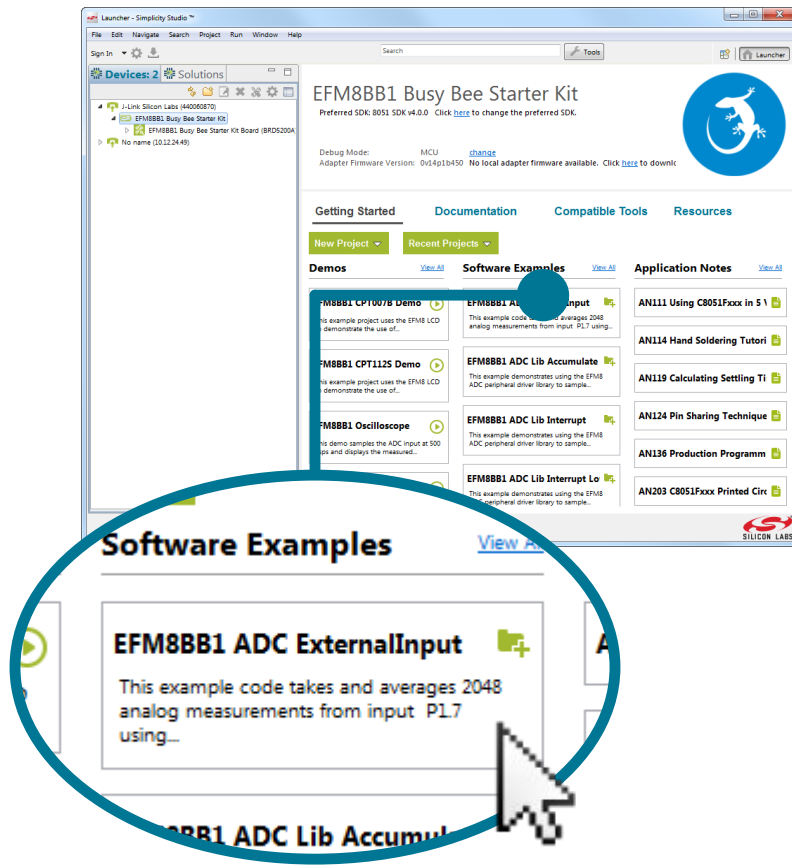
### Demos

Demos are a quick and easy way to evaluate a device without compiling or debugging code. Demos can be accessed using the [Getting Started]>[Demos] area in the launcher.



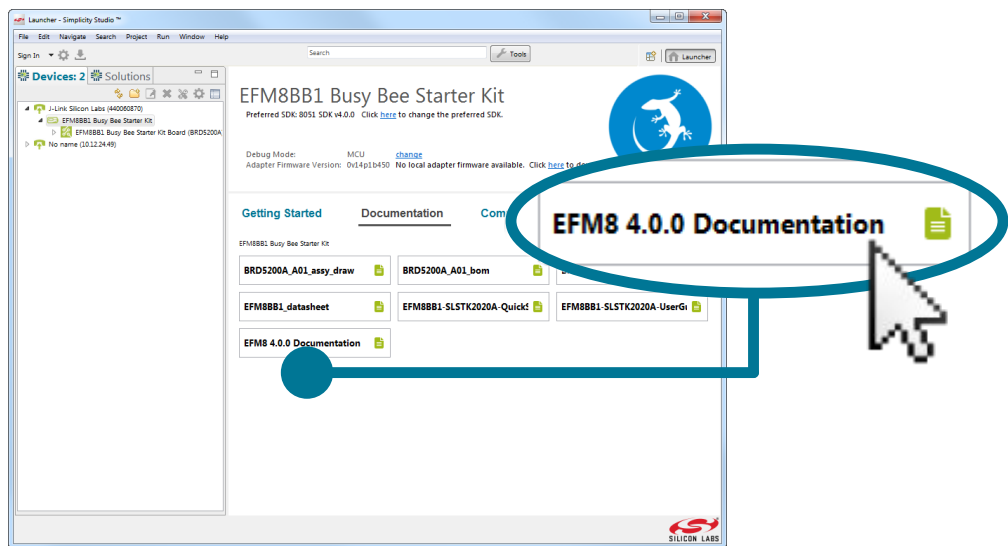
## Software Examples

Software examples can be imported, compiled, and downloaded using the [Getting Started]>[Software Examples] area in the launcher.



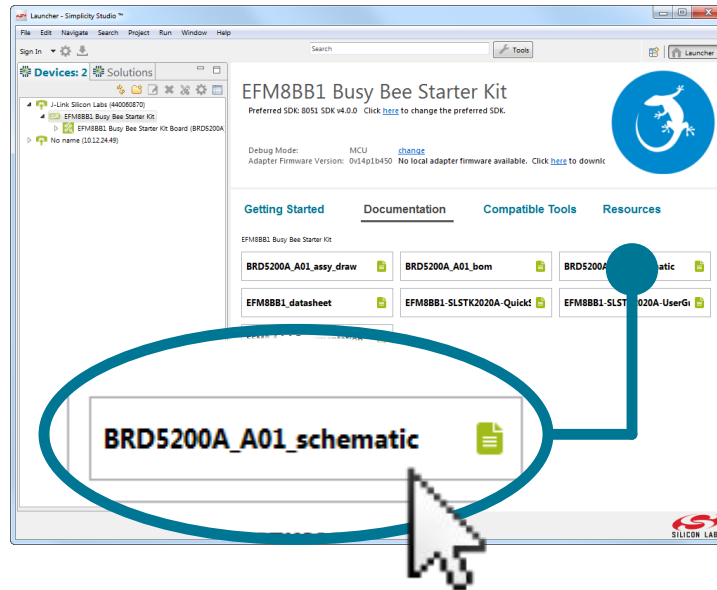
## Software Documentation

Software documentation provides more information on the firmware libraries available for the selected device. Access these documents using the [Documentation] area in the launcher.



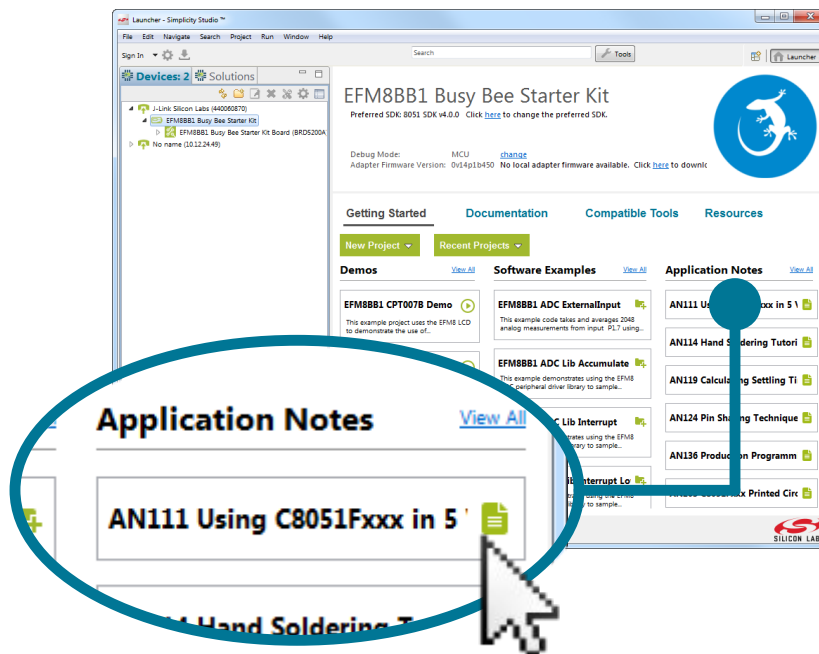
## Kit Documentation and User's Guide

Kit documentation like the schematic and detailed board user guide can be found using the **[Documentation]** area of the launcher.



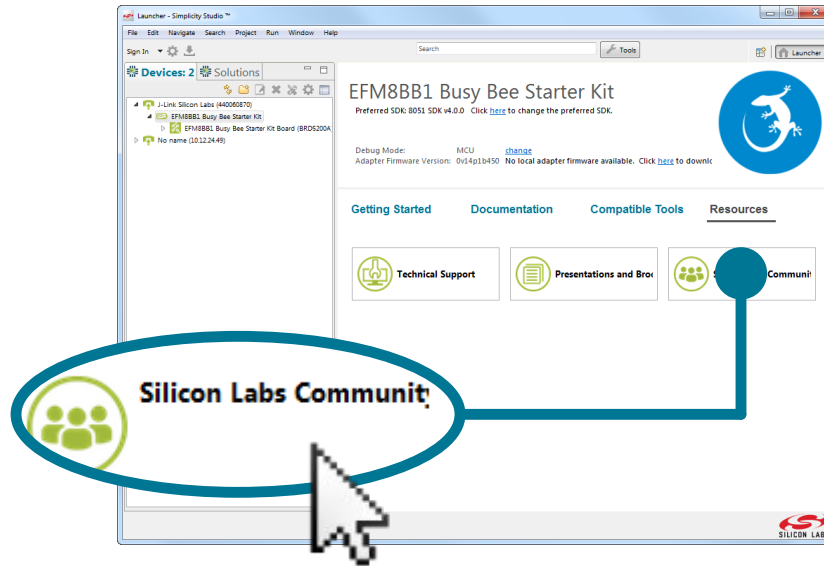
## Application Notes

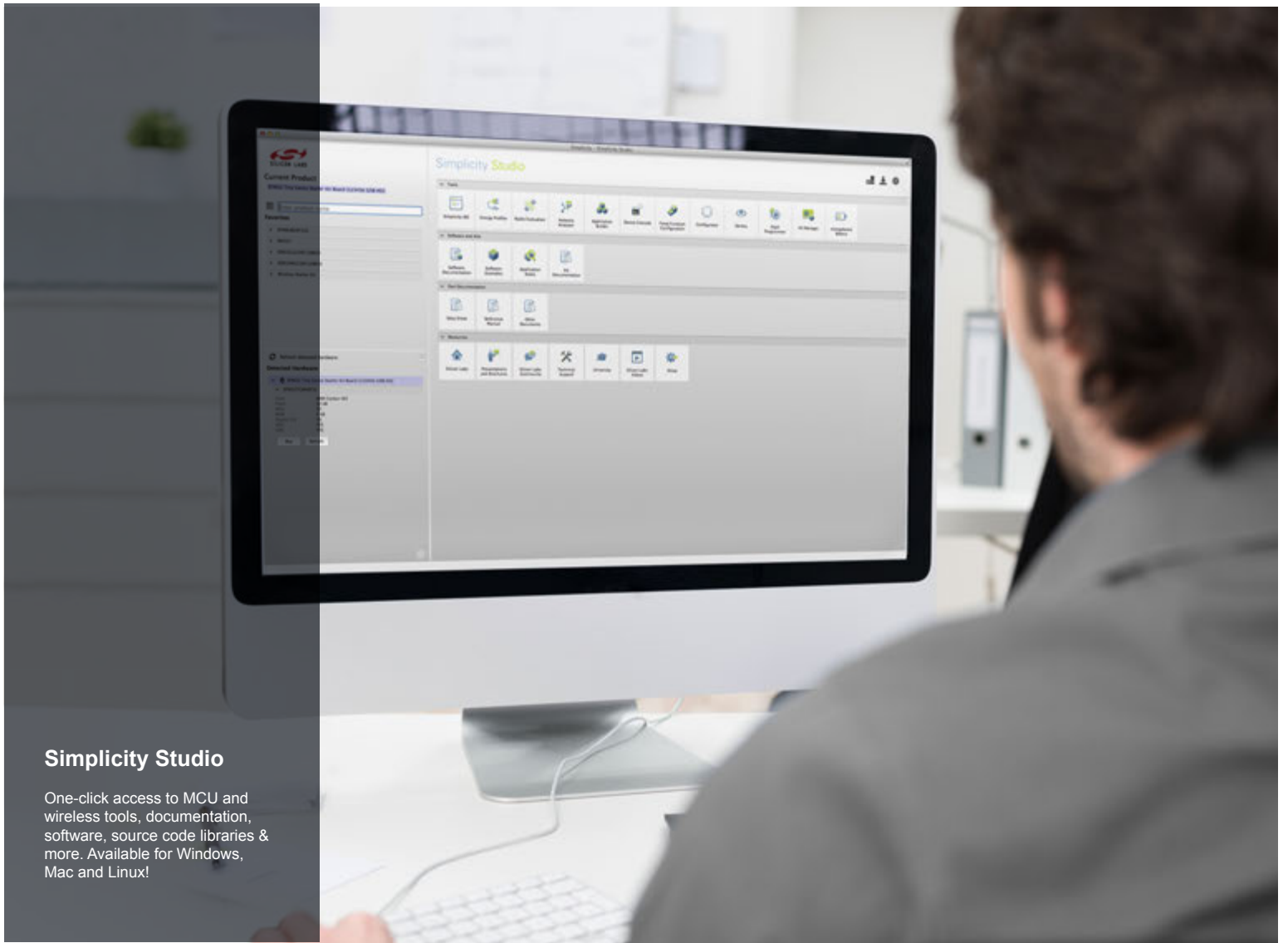
Application Notes on peripherals and other various topics can be accessed using the **[Getting Started]>[Software Examples]** area of the launcher.



## Community and Support

Have a question? Visit the community by clicking the **[Resources]>[Silicon Labs Community]** area of the launcher.





## Simplicity Studio

One-click access to MCU and wireless tools, documentation, software, source code libraries & more. Available for Windows, Mac and Linux!



**IoT Portfolio**  
[www.silabs.com/iot](http://www.silabs.com/iot)



**SW/HW**  
[www.silabs.com/simplicity](http://www.silabs.com/simplicity)



**Quality**  
[www.silabs.com/quality](http://www.silabs.com/quality)



**Support and Community**  
[community.silabs.com](http://community.silabs.com)

### Disclaimer

Silicon Laboratories intends to provide customers with the latest, accurate, and in-depth documentation of all peripherals and modules available for system and software implementers using or intending to use the Silicon Laboratories products. Characterization data, available modules and peripherals, memory sizes and memory addresses refer to each specific device, and "Typical" parameters provided can and do vary in different applications. Application examples described herein are for illustrative purposes only. Silicon Laboratories reserves the right to make changes without further notice and limitation to product information, specifications, and descriptions herein, and does not give warranties as to the accuracy or completeness of the included information. Silicon Laboratories shall have no liability for the consequences of use of the information supplied herein. This document does not imply or express copyright licenses granted hereunder to design or fabricate any integrated circuits. The products are not designed or authorized to be used within any Life Support System without the specific written consent of Silicon Laboratories. A "Life Support System" is any product or system intended to support or sustain life and/or health, which, if it fails, can be reasonably expected to result in significant personal injury or death. Silicon Laboratories products are not designed or authorized for military applications. Silicon Laboratories products shall under no circumstances be used in weapons of mass destruction including (but not limited to) nuclear, biological or chemical weapons, or missiles capable of delivering such weapons.

### Trademark Information

Silicon Laboratories Inc.®, Silicon Laboratories®, Silicon Labs®, SiLabs® and the Silicon Labs logo®, Bluegiga®, Bluegiga Logo®, Clockbuilder®, CMEMS®, DSPLL®, EFM®, EFM32®, EFR®, Ember®, Energy Micro, Energy Micro logo and combinations thereof, "the world's most energy friendly microcontrollers", Ember®, EZLink®, EZRadio®, EZRadioPRO®, Gecko®, ISOModem®, Precision32®, ProSLIC®, Simplicity Studio®, SIPHY®, Telegesis, the Telegesis Logo®, USBXpress® and others are trademarks or registered trademarks of Silicon Laboratories Inc. ARM, CORTEX, Cortex-M3 and THUMB are trademarks or registered trademarks of ARM Holdings. Keil is a registered trademark of ARM Limited. All other products or brand names mentioned herein are trademarks of their respective holders.



Silicon Laboratories Inc.  
400 West Cesar Chavez  
Austin, TX 78701  
USA

<http://www.silabs.com>