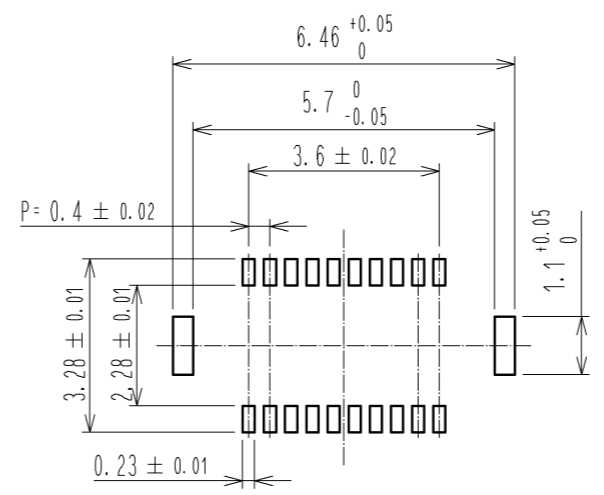
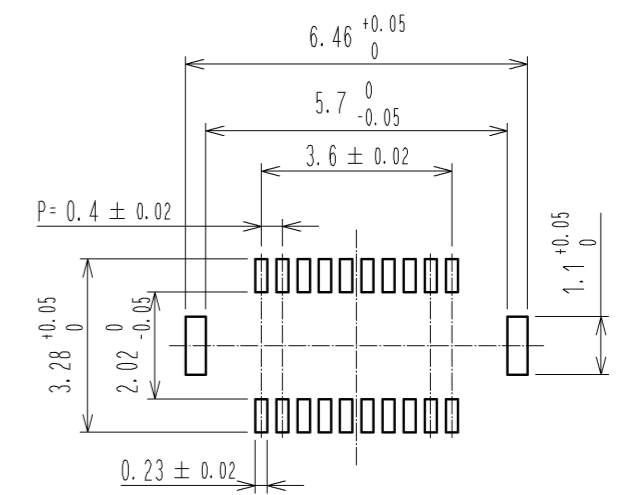


RECOMMENDED METAL MASK  
OPENING PATTERN

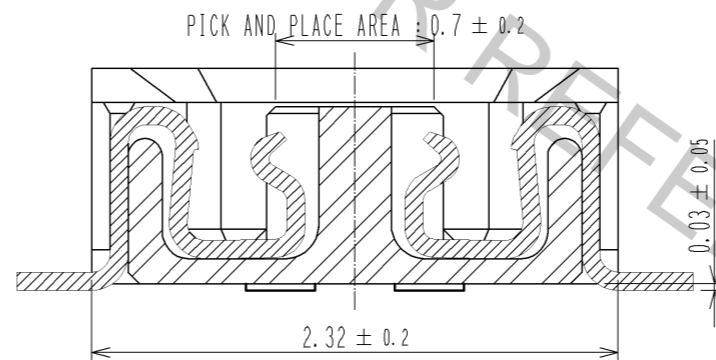


RECOMMENDED SOLDER PASTE THICKNESS: 120µm

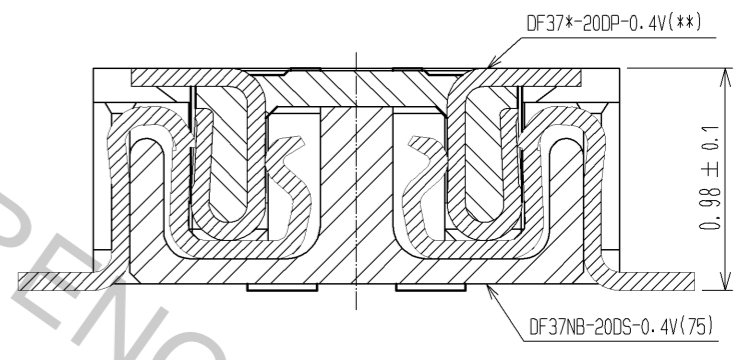
RECOMMENDED PATTERN



A-A (30 : 1)

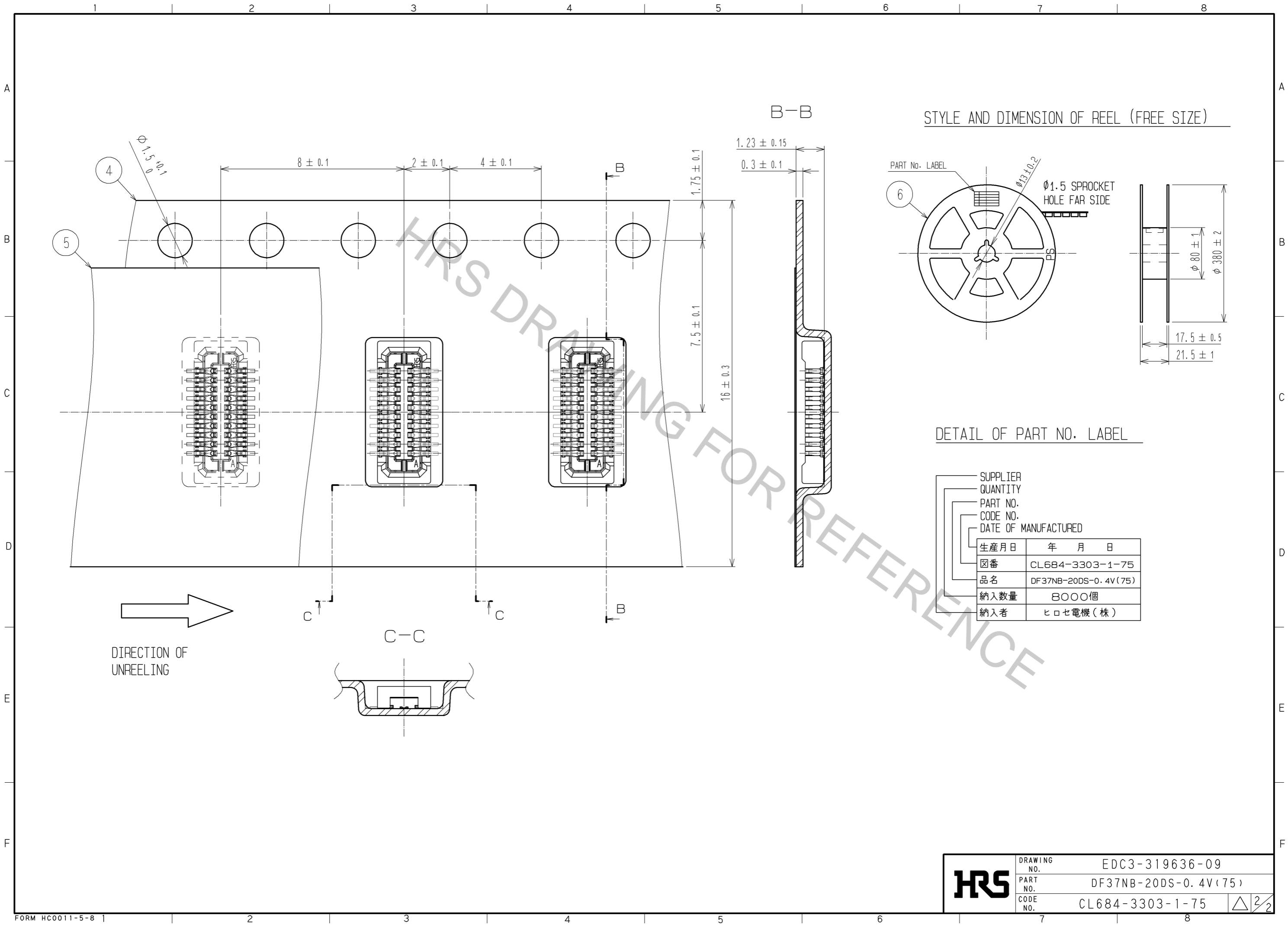


ENGAGEMENT FIGURE (30 : 1)



- NOTE 1. ALL LEADS CO-PLANARITY SHALL BE 0.08 MAX.  
 2. PER REEL : 8000 CONNECTORS.  
 3. AT THE BEGINNING OF THE REEL, 100 mm AT MIN SHALL BE EMPTY POCKETS.  
 AT THE END OF THE REEL, 160 mm AT MIN SHALL BE EMPTY.  
 4 CONTACT PLATING SPECIFICATIONS.  
 CONTACT AREA : GOLD 0.1µm MIN.  
 SMT LEAD : GOLD 0.05µm MIN.  
 UNDERPLATING : NICKEL 1µm MIN.  
 (SURFACE : SEALING)  
 5 METAL HOLD DOWN PLATING SPECIFICATIONS.  
 MOUNTING AREA: GOLD 0.05µm MIN.  
 UNDERPLATING : NICKEL 1µm MIN.  
 6. PEEL FORCE OF COVER TAPE REFERS TO JIS C 0806.

3	PHOSPHOR BRONZE	5	6	PS	PLASTIC REEL (BLACK)			
2	PHOSPHOR BRONZE	4	5	POLYESTER	CLEAR(COVER TAPE)			
1	LCP	UL94V-0, BLACK	4	PS	CLEAR(EMBOSSED CARRIER TAPE)			
NO.	MATERIAL	FINISH . REMARKS	NO.	MATERIAL	FINISH . REMARKS			
UNITS	mm	SCALE	FREE	COUNT	DESCRIPTION OF REVISIONS	DESIGNED	CHECKED	DATE
HRS		HIROSE ELECTRIC CO., LTD.	APPROVED : KH. IKEDA	09.02.02	DRAWING NO.	EDC3-319636-09		
			CHECED : TS. MIYAZAKI	09.02.02	PART NO.	DF37NB-20DS-0.4V(75)		
			DESIGNED : RT. SHIMIZU	09.01.30	CODE NO.	CL684-3303-1-75		
			DRAWN : KR. AJITO	09.01.19				



<b>HRS</b>	DRAWING NO.	EDC3-319636-09
	PART NO.	DF37NB-20DS-0.4V(75)
	CODE NO.	CL684-3303-1-75
		△ 2/2